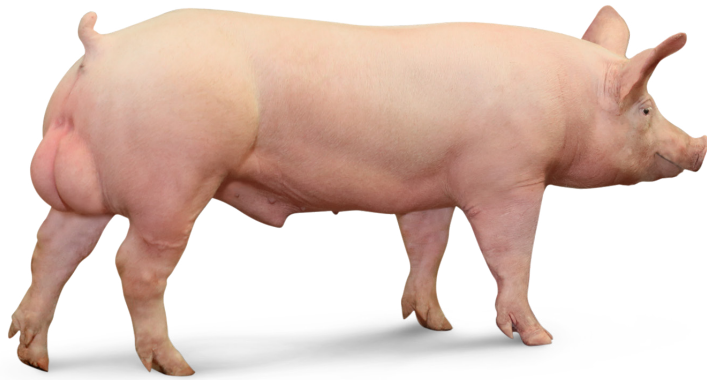


# PIC<sup>®</sup>337: Heavyweight champ



The PIC<sup>®</sup>337 is known for maximizing profitability throughout the pork chain. The PIC<sup>®</sup>337 delivers exceptional performance both on the farm and at the plant, through:

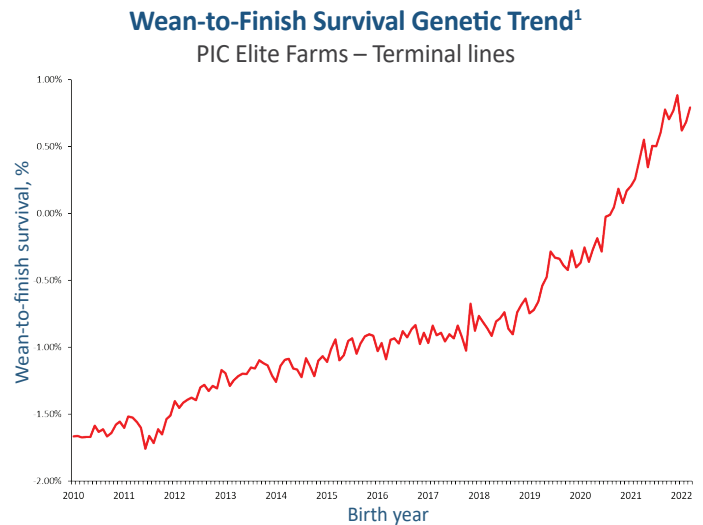
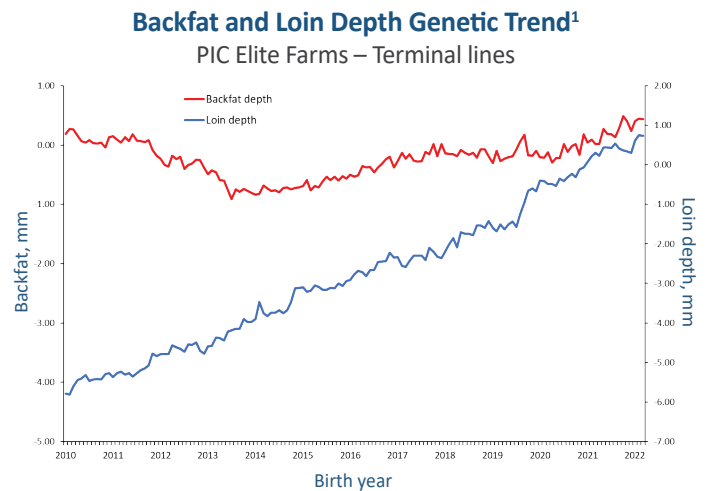
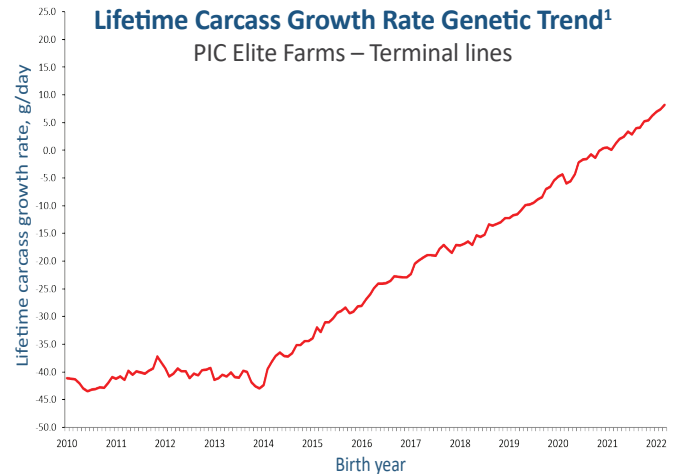
- Superior feed conversion
- Excellent heavy weight performance
- Lean gain efficiency
- Valuable carcasses
- Excellent meat quality

The PIC<sup>®</sup>337's world-class feed conversion coupled with outstanding performance at heavier weights increases profit for producers. In addition, exciting recent advances in genetic improvement are already visible in PIC Elite Farms (genetic nucleus farms).

 Never Stop Improving  
*Your Profitability.*

## Accelerating Genetic Improvement

Expansion in elite sow populations allows for increased selection intensity for traits impacting profitability.



<sup>1</sup> Vertical axis is normalized to zero average for last 2 years.

**PIC<sup>®</sup>**

**PIC Philippines, Inc.**

Tel. No. +632 7-914-2594 | Fax No. +632 8-637-6899

Website: <http://ph.PIC.com>

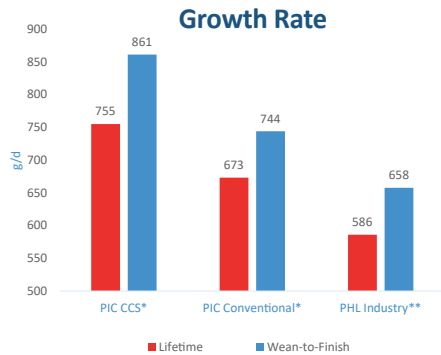
©PIC 2024 All Rights Reserved. PIC<sup>®</sup> is a registered trademark.

# PIC<sup>®</sup>337: Heavyweight champ

Never Stop Improving  
*Your Profitability.*

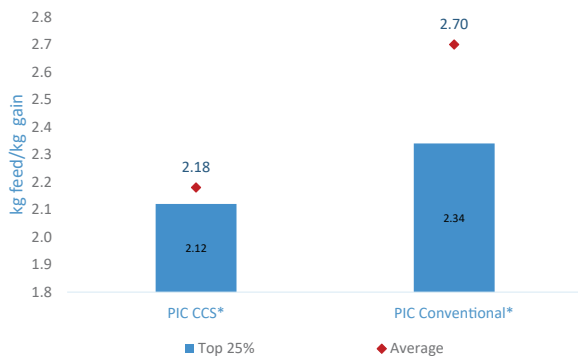
## PIC<sup>®</sup>337 outperforms in the Philippines across environments

### PIC<sup>®</sup>337-sired market hog close outs



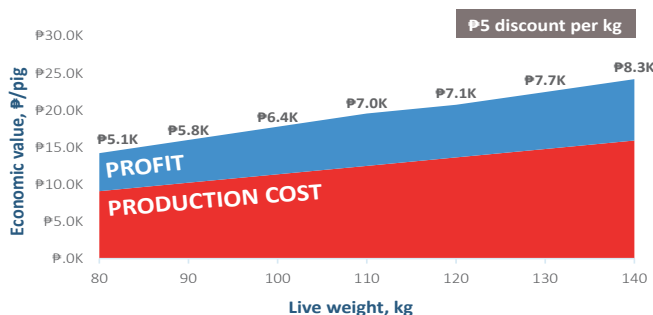
CCS = climate controlled system  
\* PIC 2021 Full year benchmarking results  
\*\* 2021 Phil. Swine Production Performance

### Wean-to-Finish Feed Efficiency



CCS = climate controlled system  
\* PIC 2021 Full year benchmarking results  
Philippine industry average for wean-to-finish feed efficiency not available

## Heavier pigs bring more income even with "discounts"!



## PIC<sup>®</sup>337 brings strength beyond production

### Superior carcass value

#### In the US...

Trait	PIC <sup>®</sup> 337	Competitor
Live Weight, kg	131.3	132.4
Hot Carcass Weight, kg	97.0	96.3
Carcass Recovery (head-off), %	73.8	73.2
Backfat Thickness (P2), mm	17.0	18.4
Carcass Lean, %	56.8	55.2

#### As well as in the Philippines...

Trait	PIC <sup>®</sup> 337
Live weight kg	125.2
Hot Carcass Weight, kg	107.0
Carcass Recovery (head-on), %	85.5
Backfat Thickness (10 <sup>th</sup> rib midline caliper), mm	17.4

Source: 2020 PIC PHL Carcass benchmarking

## Excellent primal yield in the Philippines

Trait	Weight, kg	Primal Yield
Carcass Weight (head-off)	95.8	-
Bone-In Shoulder	24.6	25.7%
Bone-In Loin	13.2	13.8%
Tenderloin	1.5	1.6%
Belly	19.2	20.0%
Bone-In Ham	26.0	27.1%
Total Primals	84.5	88.2%

Source: 2021 PIC PHL Carcass benchmarking