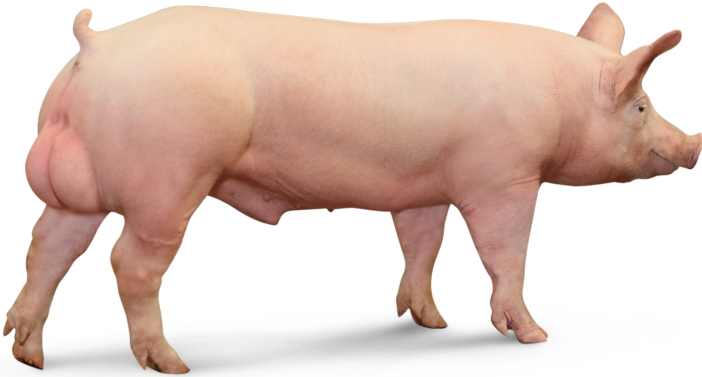


# PIC®337

## Heavyweight champ

Never Stop Improving  
*Your Profitability.*

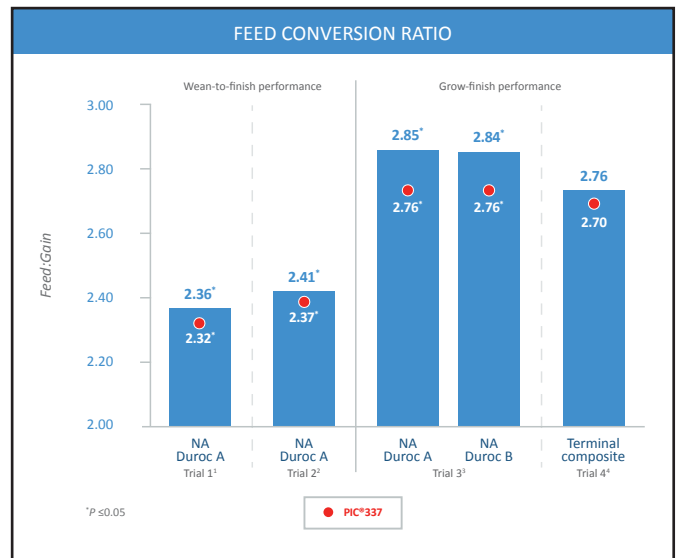


The PIC®337 is the market leader in profitability and feed efficiency. He sires high-quality, full-value pigs that perform on your farm and at the plant. As the top terminal composite sire in the market, his superior genetic merit means more profitability for you.

- Dominant economic advantage
- Superior feed conversion
- Outstanding robustness
- Unrivalled heavy-weight performance
- Valuable carcasses with high meat quality

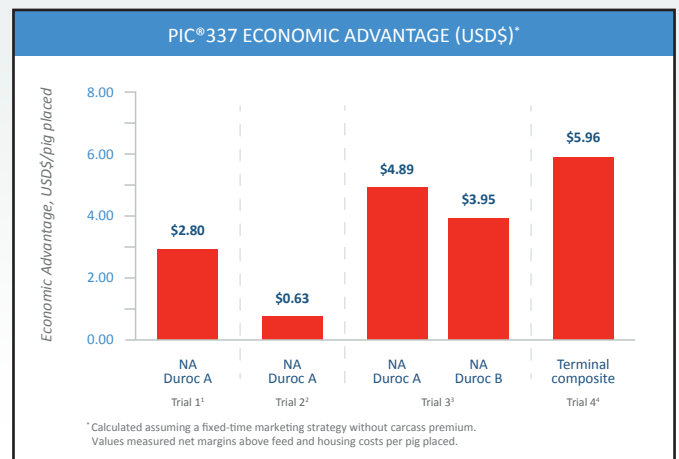
## Superior growth and feed efficiency

PIC®337's offspring growth rate and feed efficiency are key drivers of profitability, unbeaten by the offspring of competitor sires, both Duroc and composite.



## Economic advantage

PIC®337 offspring consistently deliver economic advantages of up to \$5.96 over competitor progeny through superior feed conversion, lean gain efficiency, piglet survivability and carcass value.



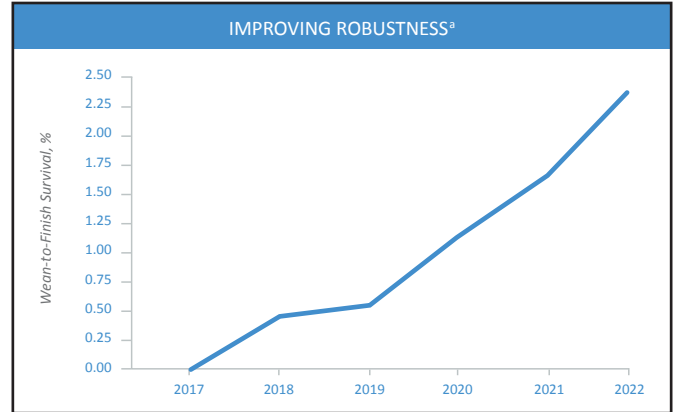
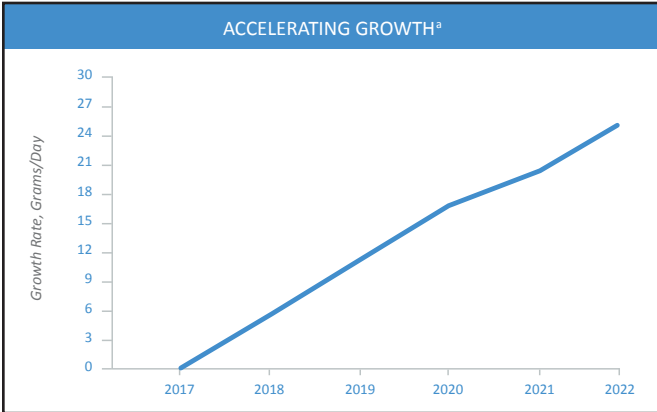
# PIC<sup>®</sup>337

## Heavyweight champ

**Never Stop Improving**  
*Customer Success.*

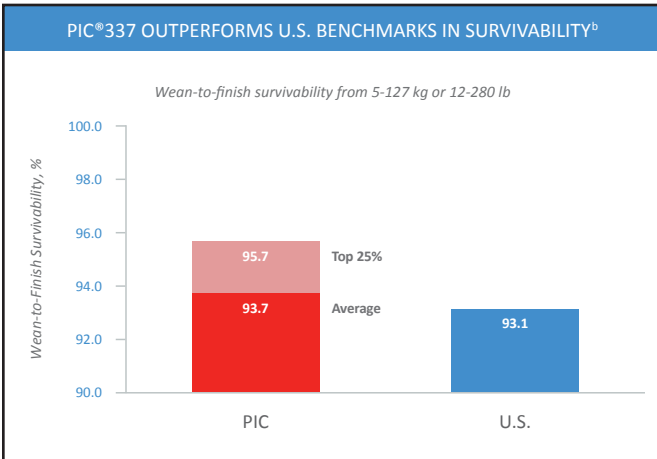
### Accelerating genetic improvement

PIC drives genetic gain in the PIC<sup>®</sup>337 at its Elite Farms, which impacts traits such as growth and robustness that directly influence profitability.



### Robust performance

The PIC<sup>®</sup>337 sires robust offspring that outperform U.S. benchmarks in survivability.



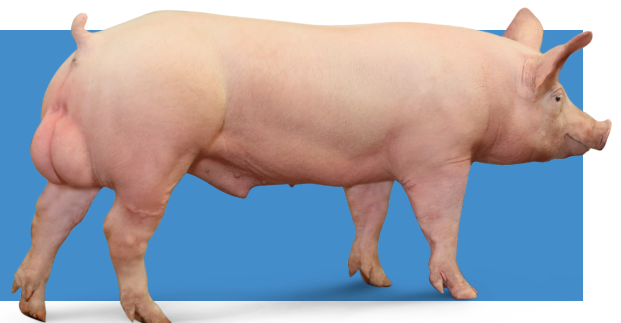
### Excellent carcass value

The PIC<sup>®</sup>337 demonstrates outstanding carcass value characteristics including loin depth, carcass lean and meat quality. He consistently delivers more loin depth than competitor Durocs and other composite sires.

CARCASS VALUE					
Trial Number	Competitor	Loin Depth (mm)		Carcass Lean (%)	
		PIC <sup>®</sup> 337	Competitor	PIC <sup>®</sup> 337	Competitor
1 <sup>1</sup>	NA Duroc A	68.8	63.2	56.8	55.2
2 <sup>2</sup>	NA Duroc A	70.2	66.3	55.6	55.2
3 <sup>3</sup>	NA Duroc A	69.6	65.3	61.9	62.2
3 <sup>3</sup>	NA Duroc B	69.6	66.8	61.9	62.1
4 <sup>4</sup>	Terminal composite	67.1	66.5	56.4	57.0

### Set up your pigs for success.

The PIC<sup>®</sup>337 leads profitability by outperforming U.S. benchmarks in offspring average daily gain, feed conversion rate and survivability. He is the heavyweight champion, backed by PIC's commitment to continuous genetic advancement and technical support.



Sources: <sup>1</sup> ES122. This trial was conducted with PRRS-positive pigs.  
<sup>2</sup> ES126.  
<sup>3</sup> ES150.  
<sup>4</sup> ES144.  
<sup>5</sup> PIC data, 2017-2022.  
<sup>6</sup> PIC<sup>®</sup>337 performance 2018-2022, U.S. National Pork Board Industry Productivity Analysis. Adjusted Wean-to-Finish Results for 2018-2022. Survivability rate calculated as the inverse of the mortality rate.

