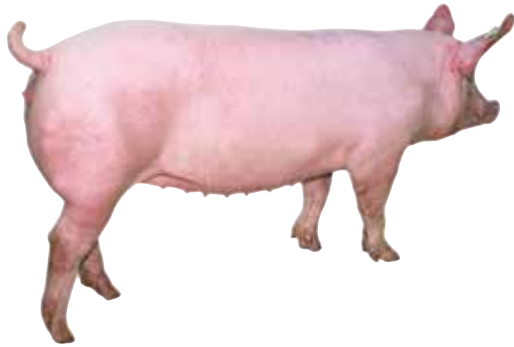


PIC[®]X54

Maximised Productivity with Increased Practicality



PIC[®]X54 is the value proposal for producers who consider herd productivity as main competitive advantage.

The PIC[®]X54 allows to maximize weaned piglets per sow per year with an increasing functional sow facilitating the production in growing, larger units.

The PIC[®]X54 differs from other hyper-prolific SOWS:

- Provides large litters to produce more than 30 pigs per sow & year, with the objective to achieve 34+.
- Improves piglet quality thanks to PIC selection traits: Individual birth weight, teats, defects.
- Increases robustness thanks to leg score & mortality selection traits

The PIC[®]X54 comes with PIC's commitment to customer success through economically relevant breeding goals, a variety of services and a healthy supply chain.

 Never Stop Improving
Genetic Potential.

Incorporates accelerated genetic gain

The PIC[®]X54 is the latest addition to PIC's female portfolio - a F1 hybrid sow based on two hyper-prolific damlines.

Top 10 %*	Line 04 (LL)	Line 05 (YY)
Total Born	24,7	26,8
Born Alive	22,2	23,8
Number of Teats	17,1	16,1
Birth Weight, kg	1,86	1,81

*at PIC Elite Farms

Large Elite population with European focus

Since the inclusion of the new damlines L04 (hyper-prolific Landrace) and L05 (hyper-prolific Yorkshire) in 2018 PIC expanded the Elite populations significantly, resulting in an European pure-bred population which is as large as any genetic supplier for hyper-prolific lines globally. Larger populations allow higher selection intensity and provide more data for accelerated genetic improvement.

Applying the full set of PIC's Genomic Tools

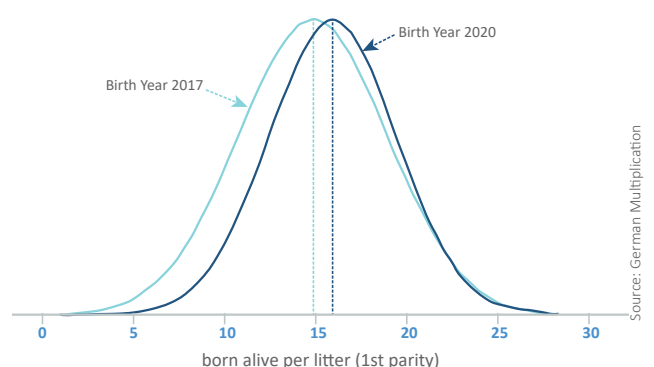
Large scale genotyping combined with meaningful data capture increases accuracy of selection decisions significantly - for faster genetic gain.

Improving more and more relevant characteristics

To select for a hyper-prolific and functional sow, relevant traits need to be included in the overall index. PIC combines quantity and quality traits. While continuing to further improve litter size PIC is selecting for more teats, higher birth weights and improved pre-wean survival, less defects and better semen quality.

Continuous improvement for high prolificacy & practicality

LARGER LITTERS
INCREASED UNIFORMITY



PIC® X54

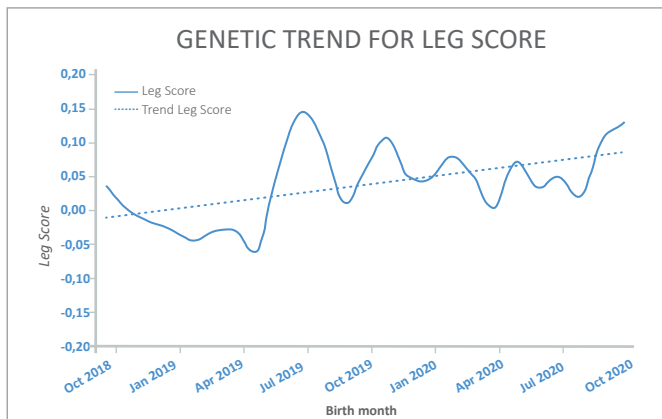
Never Stop Improving
Performance.

Maximised Productivity with Increased Practicality

Robust Sow delivers high quality piglets

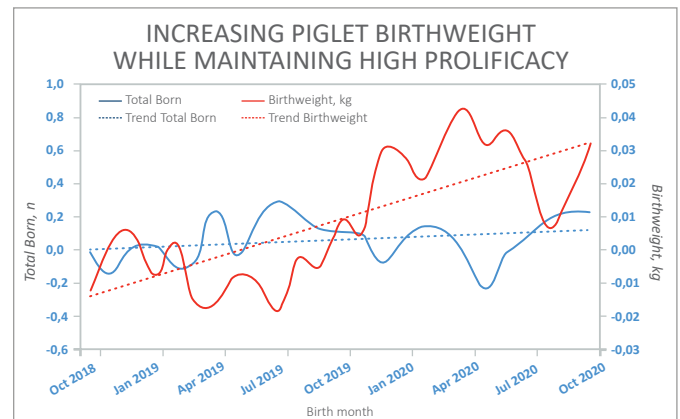
Improved Sow Robustness

Locomotive issues are high important culling reasons in hyper-prolific lines. PIC's detailed leg scoring captures data which are included in the selection index. This allows selection for strong females with high retention rates and long productive lives.



Improved Piglet Birth Weight

PIC increases individual piglet birth weight while maintaining high prolificacy. Within the past two years PIC has increased birth weight by 50 g. In consequence piglets are more vital and show higher performance in subsequent production stages.

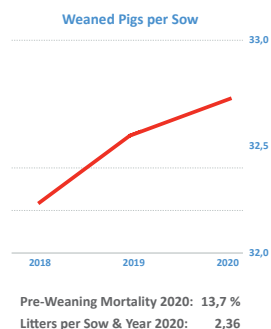
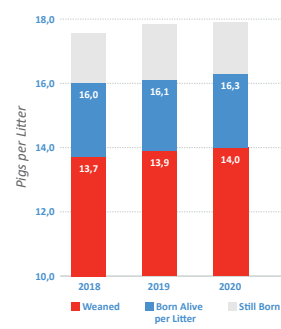


Proven records in commercial environment

Large scale output in different geographies

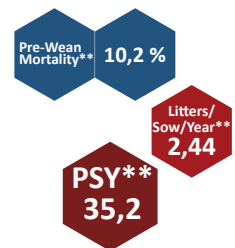
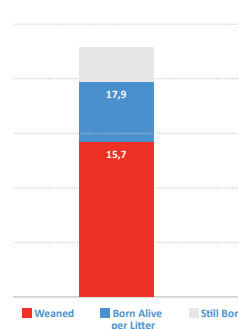
The PIC® X54 delivers large litters combined with increased piglet quality and improved sow robustness.

LARGE LITTERS ...



Source: Customer Database in Germany, approx. 52.000 sows

... RESULT IN HIGH PRODUCTIVITY



Source: Benchmark Report Russia, Top 5% Farms, representing 67.500 sows

*Average of the Top 5% Farms

** Average of the Top 5% Farm, ranked by the respective criterion



PIC UK

Phone +44 (0) 1270 61 67 10
AI Order Line 0800 9177302
Email PIC.UK.Info@genusplc.com

www.gb.pic.com

©PIC 2021 - All Rights reserved PIC® is a registered trademark.

Contact your PIC Account Team
for more information!