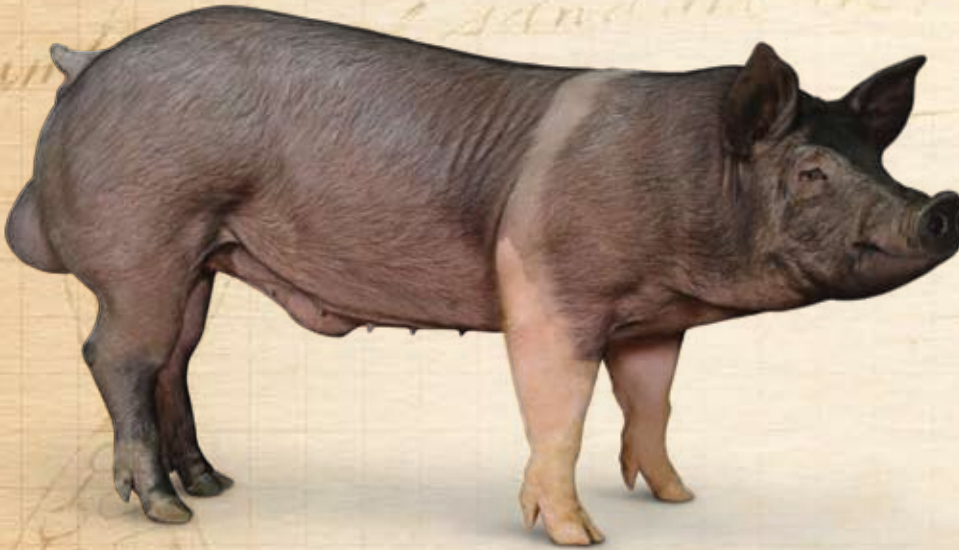


PIC327

Efficient Lean Production

PIC

NEVER STOP IMPROVING



The Industry's Leading Lean Production Boar

Known for reducing production costs without sacrificing lean content, the PIC327 continues its 20 year reputation for:

- excellent growth rate and feed efficiency
- low backfat levels and high lean content
- heavier slaughter weights without sacrificing lean or backfat

Long-standing Reputation

The PIC327 boar continues to build on its outstanding reputation allowing producers to maximize value from packer payment grids with increasing emphasis on lean.

PRODUCTION TRAITS		CARCASS PERFORMANCE <i>Adjusted to 203.5 pounds</i>		MEAT QUALITY	
100 pens of pigs. 4,845 total pigs.		4,345 carcasses.		2,085 loins. 2,346 hams.	
Finisher entry weight, lb.	59.8	Backfat, in.	.70	Loin pH	5.84
Market weight, lb.	277.7	Loin depth, in.	2.39	Ham pH	5.93
Average daily gain, lb./d	2.07	Lean, %	55.8		
Days to market	105.3				
Feed conversion	2.47				
Mortality rate, %	4.8				
Removals, %	1.9				
Full-value pigs marketed, %	93.3				

PIC commercial pigs from performance validation and crossbred GN program marketed between December 2003 and May 2007.

